



SPASuctions

Balboa Water Group Leads the Industry Again

- 256, 179 or 124 Flow Rating
- Easy to install and service
- Available in different colors and finishes
- Products meet the new VGB 2008 Law for spa suction

NEW!
256 GPM



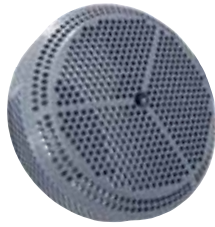
BALBOA
water group

Different Suction Colors

256/179 Covers



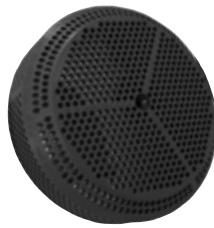
Grey



Metallic Grey



White



Black

124 Covers



Grey



Metallic Grey



White

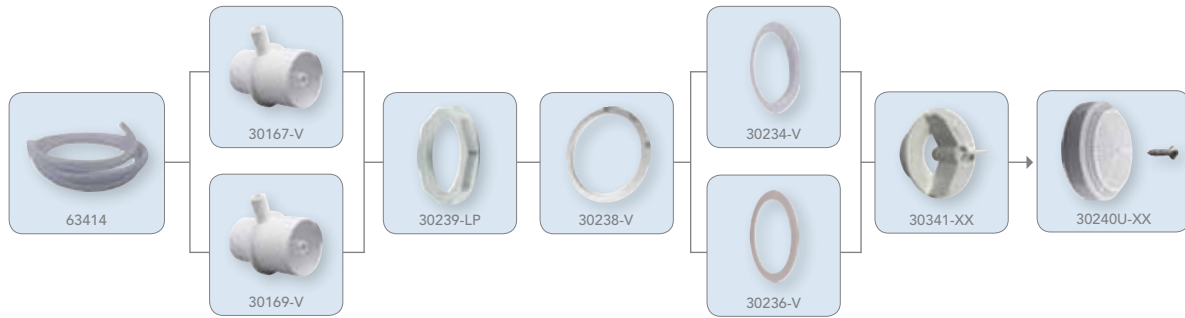


Black

Note: More colors finishes are available. Please visit www.balboawater.com/colors or contact customer service for additional details. 714.384.0382.



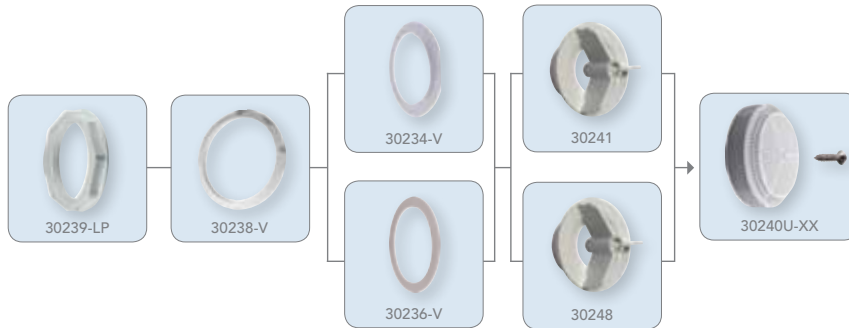
NEW! 256 GPM Suction Flow



Material No.	Descriptions
30240U-XX	VGB 2008 256/179 GPM Suction Cover And Screw/UV
30341-XX	VGB 2008 256GPM Buttress Suction Wall Fitting x Custom Slip. Note: XX=BK, WH, CG.
30234-V	Suction L Gasket Uses 3.75" (9.52cm) Hole Size
30236-V	Suction Flat Gasket Uses 3.63" (9.22cm) Hole Size
30238-V	Compensating Ring
30239-LP	Suction Nut
30167-V	2" (5.08cm) SPG x Custom SPG x 3/4" (1.90cm) Smooth Barb Vacuum Table Adapter
30169-V	2.5" (6.35cm) SPG x Custom SPG x 3/4" (1.90cm) Smooth Barb Vacuum Tube Adapter
63414	3/4" (1.90cm) ID x 1" (2.54cm) OD Tubing 8ft Long

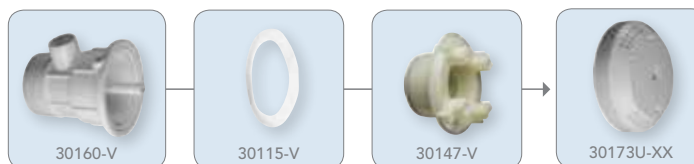
Note: VGB suction 256 GPM are patented under US Patent No. 8,191,183.

179 GPM Suction Flow



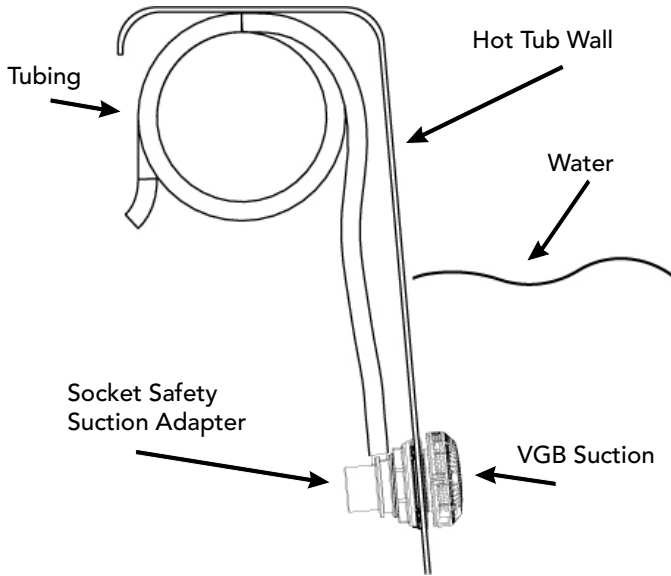
Material No.	Descriptions
30240U-XX	VGB 2008 256/179 GPM Suction Cover And Screw/UV
30241-XX	VGB 2008 179 GPM Wall Fitting x 2" S (5.08cm). Note: XX=BK, WH, CG.
30248	VGB 2008 179 GPM Wall Fitting x 2.5" S (6.35cm)
30234-V	Suction L Gasket Uses 3.75" (9.52cm) Hole Size
30236-V	Suction Flat Gasket Uses 3.63" (9.22cm) Hole Size
30238-V	Compensating Ring
30239-LP	Suction Nut

124 GPM Suction Flow

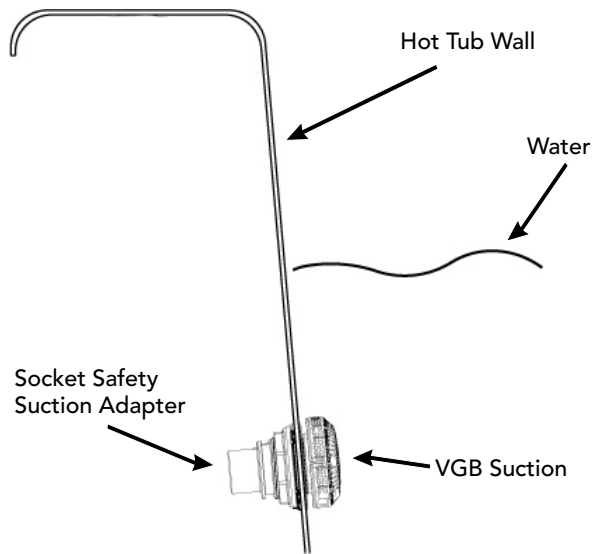


Material No.	Descriptions
30173U-XX	VGB 2008 124 GPM Suction Cover And Screw/UV
30147-V	VGB 2008 Wall Fitting
30115-V	Suction Flat Gasket
30160-V	2" (5.08cm) SPG x 1/2" (1.27cm) Socket Safety Suction Adapter

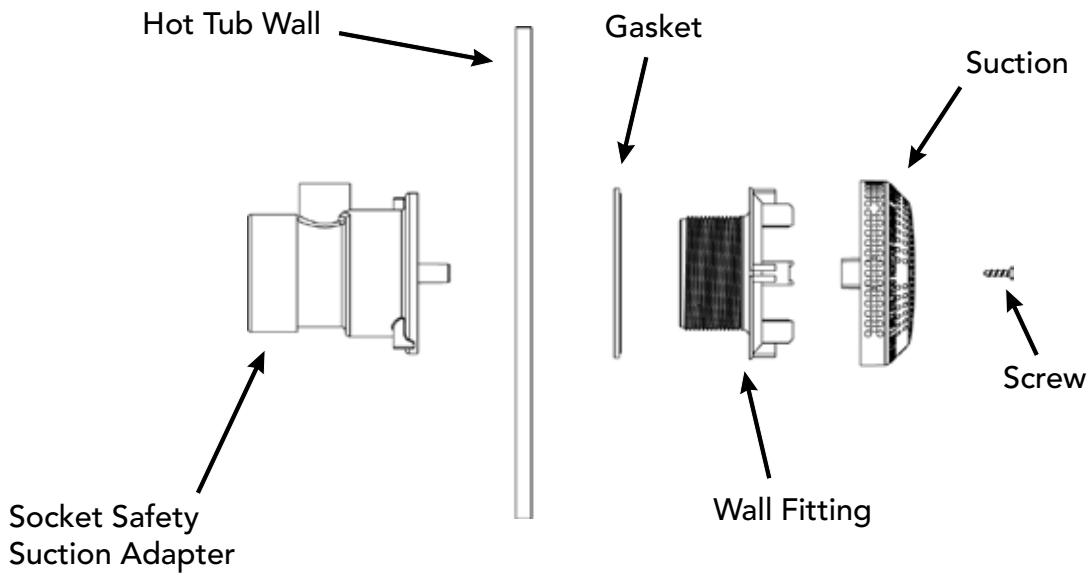
Spa VGB Suction Placement With 256 GPM Vacuum Break



Spa VGB Suction Placement With 179 GPM



Product Assembly Guide



Note: This is a general assembly guide chart. Additional products may be needed with different VGB suction.